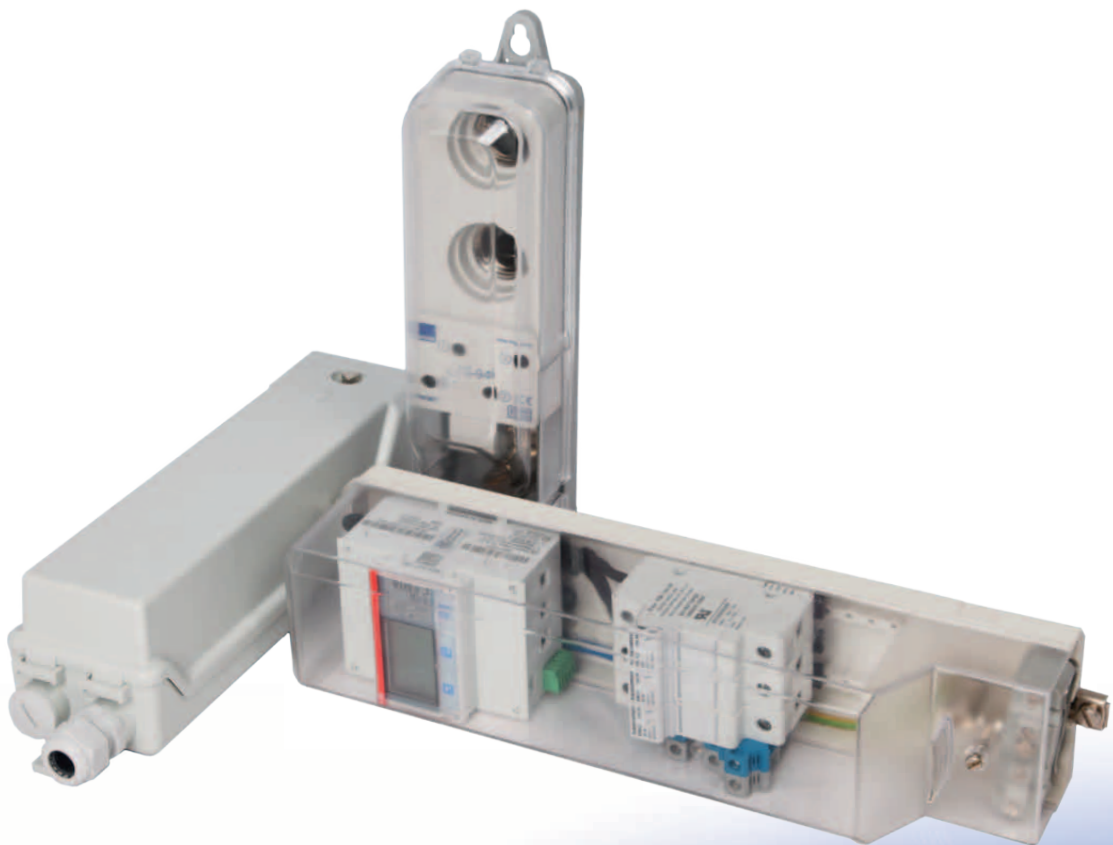




\ **mastering electricity**
worldwide

ELEQ Connection Boxes

Connection Boxes for Public Lighting,
Traffic Control Systems, Charging Stations
and Outdoor Advertising



Connection Boxes

ELEQ Connection Boxes: for lighting applications (LS)

ELEQ's connection boxes for lighting applications have proven their reliability for many years. The connection boxes are suitable for looped circuits wiring and have the unique ELEQ mantle terminal technology. Additionally, some connection boxes are equipped with phase switching. The connection boxes have automatic earthing or are double insulated. Furthermore, all metal parts are brass nickel-plated resulting in high conductivity and corrosion protection and there are models available with Surge Protection Device (SPD).

Properties

- Suitable for minimum pole diameter of 74, 84 or 94 mm
- Fuse type D01, DII or 10x38
- Transparent impact-proof cap of polycarbonate



Order specifications

Model	Ø	Number of fuses	Fuses included	Fuse type	Maximum terminal size	Number of terminals	SPD	Earth-neutral connection	Phase switch	Double insulated	Article number
LS-74	74	1	No	E27 / DII	10mm ²	5	No	No	No	No	5L5001
LS-74	74	1	1 x 6A	E14 / Do1	10mm ²	5	No	Yes	No	No	5L5103
LS-74	74	1	1 x 6A	E14 / Do1	10mm ²	4	No	No	No	Yes	5L4144
LS-84	84	1	1 x 6A	E14 / Do1	16mm ²	5	No	Yes	Yes	No	5L1303
LS-84	84	1	1 x 6A	E14 / Do1	16mm ²	4	No	No	Yes	Yes	5L4241
LS-84	84	1	1 x 6A	E14 / Do1	16mm ²	4	No	No	Yes	Yes	5L4248
LS-84	84	1	1 x 6A	E14 / Do1	16mm ²	4	Yes	No	Yes	Yes	5L4211
LS-84	84	2	2 x 6A	E14 / Do1	16mm ²	5	No	Yes	No	No	5L1103
LS-84	84	2	2 x 6A	E14 / Do1	16mm ²	4	No	No	No	Yes	5L4152
LS-84	84	3	No	10*38	16mm ²	5	No	Yes	No	No	5L3250
LS-84	84	3	3 x 6A	E14 / Do1	16mm ²	5	No	Yes	No	No	5L1203
LS-84	84	3	3 x 6A	E14 / Do1	16mm ²	4	No	No	No	Yes	5L4153
LS-94	94	1	No	E27 / DII	10mm ²	5	No	No	No	No	5L2401
LS-94	94	1	No	E27 / DII	10mm ²	5	Yes	No	Yes	No	5L2411
LS-94	94	1	No	E27 / DII	10mm ²	5	No	No	Yes	No	5L2409
LS-94	94	1	1 x 2A	E27 / DII	10mm ²	5	No	No	No	Yes	5L2408
LS-94	94	1	1 x 6A	E27 / DII	10mm ²	5	No	No	No	No	5L2501
LS-94	94	2	2 x 2A	E27 / DII	10mm ²	5	No	No	No	Yes	5L2308
LS-94	94	2	No	E27 / DII	10mm ²	5	No	No	No	No	5L2303
LS-94XL	99	2	2 x 6A	E27 / DII	16mm ²	5	No	No	Yes	No	5L0409-6A



Reliable and easy to install connections in lighting applications

ELEQ Connection Boxes: for lighting and special applications (LS)

ELEQ's extra strong connection boxes for lighting applications have proven their reliability for many years. The connection boxes are developed for use in extreme surroundings and are suitable for mounting inside as well as outside lighting poles and for wall mounting. Also those connection boxes are suitable for looped circuits wiring and have the unique ELEQ mantle terminal technology.

Properties

- For minimum pole diameter from 100 till 115 mm
- Fuse type D01, DII, 10x38 and/or circuit breaker
- Protection degree IP55 and IK10



Order specifications

Model	Ø	Number of fuses	Fuses included	Fuse type	Circuit Breaker	Maximum terminal size	Number of terminals	Earth-neutral connection	Double insulated	Article number
LS-100	100	1	1 x 6A	E14 / Do1	6A -30Ma	16mm ²	4	No	No	5L4150
LS-100	100	2	2 x 6A	E14 / Do1		25mm ²	4	No	Yes	5L4146
LS-100	100	2	2 x 6A	E14 / Do1		16mm ²	5	No	Yes	5L8214
LS-100	100	2	2 x 6A	E27 / DII		16mm ²	5	No	Yes	5L8020
LS-100	100	3	No	10*38		16mm ²	5	Yes	Yes	5L8001
LS-100	100	3	No	10*38		16mm ²	5	No	Yes	5L8052
LS-100	100	3	No	10*38		25mm ²	5	Yes	Yes	5L8008
LS-100	105	-	No		6A - 30Ma	16mm ²	5	Yes	No	5L8013
LS-100	108	-	No		6A - C-type	16mm ²	5	Yes	Yes	5L8005-H
LS-100	108	-	No		40A - C-type	16mm ²	5	Yes	No	5L8026
LS-100	110	-	No		6A - 30Ma	16mm ²	5	Yes	No	5L8021
LS-100	110	1	No	10*38	6A - 30Ma	16mm ²	5		No	5L8022
LS-100	110	1	No	10*38	6A - 30Ma	16mm ²	5	No	No	5L8025
LS-100	110	1	No			16mm ²	5	No	Yes	5L8012

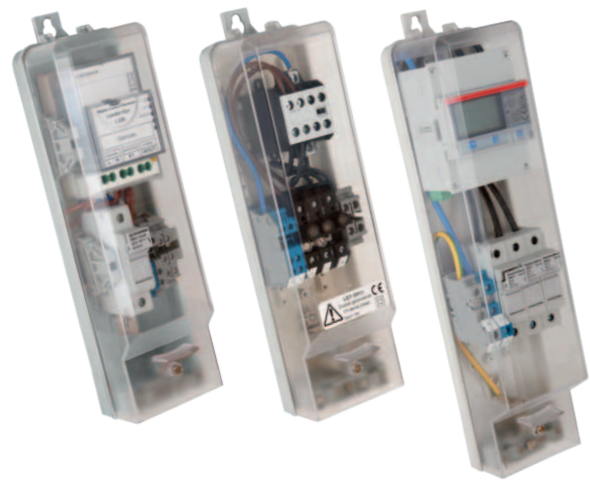
Connection Boxes

ELEQ Connection Boxes: for special applications (LS)

ELEQ's connection boxes for special applications have proven their reliability for many years. The connection boxes are suitable for installation of (e)VSAs, dimming systems, circuit breakers and more to meet customer requirements. The boxes can be used in lighting masts, billboards, route signs, public transport shelters, CCTV and more.

Properties

- For minimum pole diameter from 74 till 110 mm
- Automatic earthing or double insulated
- Wide range of fuse types and circuit breakers possible
- Wide range of electronic devices possible
- On customer request. Please contact our sales department for the possibilities



Order specifications

Model	Ø	Description	Purpose	Article number
LS-74	74	Including fuse and earth fault relay	Street furniture	5L6015
LS-94	94	Empty box with 2 x Din rail	Customized solution	5L6003
LS-94	94	Including 2 fuses and 9 terminals	CCTV	5L6009
LS-94	94	Including integrated Philips Dynadimmer	Dimming	5L2501
LS-94XL	99	Empty box with 2 x Din rail	Customized solution	5L-flex
LS-94XL	99	Including 2 fuses and relay	Switching from a distance	5L6018A
LS-94XL	99	Including Elster ripple control receiver	Switching from a distance	5L6026
LS-94XL	99	Including Landis & Gyr ripple control receiver	Switching from a distance	5L6027
LS-94XL	99	Including circuit breaker	Street furniture	5L6044
LS-99	99	With Plug-In connection including plug	Public Lighting	5L6090
LS-99	99	For DC-network	Public Lighting	5L6050
LS-100	100	Including 2 fuses and Astro clock	To programm on/off switching	5L8028
LS-110	110	Including kWh Measuring Instrument, three phase	Street furniture	5L6041
LS-110	110	Suitable to build in kWh Measuring Instrument	Street furniture	5L6040
LS-110	110	Including kWh Measuring Instrument, one phase	Street furniture	5L6039



ELEQ Pillar Boxes: for wall mounting and stand-alone assembly

To be able to install our connection boxes on a wide range of places, ELEQ also offers pillar boxes. The pillar boxes have a solid construction. Our range of pillar boxes varies in size and colour. The boxes can be used for wall mounting, wall flush mounting and stand-alone assembly.

Properties

- Suitable for one, two or three connection boxes
- Stainless steel 304
- Including standard stainless steel triangle lock
- Sliding rails including nuts
- Standard colour RAL7032 for 2RVS..line
- Colour and sizes on customer request



Order specifications

Model	Suitable for number of connection boxes	Length	Purpose	Article number
2RVS30	1 x Ø 94	Short	Wall mounting	2RVS30
2RVS35	2 x Ø 94	Short	Wall mounting	2RVS35
2RVS35V	2 x Ø 94	Extended	Stand alone	2RVS35V
2RVS45	1 x Ø 110	Short	Wall mounting	2RVS45
2RVS45V	1 x Ø 110	Extended	Stand alone	2RVS45V
2RVS50	1 x Ø 94	Short	Built in housefront	2RVS50
2RVS60	1 x Ø 94	Extended	Stand alone	2RVS60
2RVS70	3 x Ø 110	Medium	No sliding rails	2RVS70
2RVS75	2 x Ø 110	Extended	Stand alone	2RVS75
2RVS80	1 x Ø 94	Short	Wall mounting	2RVS80

Model	Suitable for number of connection boxes	Length	Purpose	Article number
5RVS13	1 x Ø 94, 100 or 110	Short	Wall mounting	5RVS13
5RVS15	1 x Ø 94, 100 or 110	Short	Wall mounting	5RVS15
5RVS22	2 x Ø 94, 100 or 110	Short	Wall mounting	5RVS22
5RVS13F	1 x Ø 94, 100 or 110	Extended	Stand alone	5RVS13F
5RVS15F	1 x Ø 94, 100 or 110	Extended	Stand alone	5RVS15F
5RVS22F	2 x Ø 94, 100 or 110	Extended	Stand alone	5RVS22F

Connection Boxes

ELEQ Fuses: for connection boxes

ELEQ's connection boxes are provided with a wide range of fuses. The fuses can be ordered separately from the connection boxes.

Properties

- Wide range of fuses available
- Fuses available in a range from 2A till 10A
- Packed per 10 pieces



Order specifications

Model	A	Article number	Can be combined with
E27 (DII)	2	06476	Fuse cap, article number 10244 Adaptor ring, article number 16965
E27 (DII)	4	10243	Fuse cap, article number 10244 Adaptor ring, article number 10242
E27 (DII)	6	16263	Fuse cap, article number 10244 Adaptor ring, article number 16264
E14 (D01)	6	80384	Fuse cap, article number 80387 Adaptor ring, article number 80388
E14 (D01)	10	80385	Fuse cap, article number 80387 Adaptor ring, article number 80389
5x25mm	2	52356.2	Fuse cap, article number 52358
	4	52356.4	Fuse cap, article number 52358
	6	52356.6,3	Fuse cap, article number 52358
10x38mm	2	81559	Cilindrical fuse
	4	81560	Cilindrical fuse
	6	81722	Cilindrical fuse



ELEQ Accessories: for connection and pillar boxes

Several accessories can help to make the use of our connection and pillar boxes easier. For example our 3-cable strain relief which makes the connection box suitable for the use of three ground cables. In addition, the triangle key for pillar boxes can be used to open and close the pillar boxes easily. In the table below all our accessories are shown.



Order specifications

Model	Article number	Packaging size
3-cable strain relief	5L9978	10
Earth neutral connection 10mm ² for LS-94	70328	100
Bracket for LS-94	5L9302	10
Bracket incl. M6 bolt	5L9301	10
Bracket LS-74 and 84	5L9002	10
Triangle key for LS-100	5L9960	1
Triangle key for pillar boxes	5L9961	1
Bending tool 16mm ²	5L9950	1
Bending tool 25mm ²	5L9951	1
Screening caps 10 mm ²	523979	100
Screening caps 16 mm ²	70420	100
Screening caps 25mm ²	71441	100
Pull relief bottom	5L9040	10
Pull relief top	5L9041	10
Relay	80969	10
Slide nut for TS32-rail	5L9658	100
Screw M6 x 16 brass	81985	1000



mastering electricity
worldwide

ELEQ designs and manufactures smart electrotechnical applications for protecting, measuring and connecting electrical energy and works worldwide for renowned power companies, system builders and installers. Together with our clients we anticipate on the future and on required innovations.

ELEQ is a true producer and partner of clients and relations who are professionally involved in energy and public lighting systems and who rely on continuous precision and high services.

ELEQ delivers all its products and applications in accordance to the high Dutch and German quality standards and serves markets in Europe and beyond from its locations in the Netherlands (Steenwijk) and Germany (Kerpen).

part of a smart world



ELEQ b.v.
P.O. Box 12, 8330 AA Steenwijk
Tukseweg 130, 8331 LH Steenwijk
The Netherlands

+31 (0) 521 533 333
info@eleq.com
www.eleq.com

Karl-Ferdinand-Braun-Straße 1
50170 Kerpen (Sindorf)
Germany

+49 (0) 22 73 / 988 70
info@eleq.com
www.eleq.com

83240 / LS-EN1708